

8th **itSMF Japan Conference**
& **itSMF Japan EXPO 2011**

November 30 • December 1, 2011
Roppongi Academyhills 49
Roppongi, Tokyo

EVENT PROSPECTUS

SPONSORSHIP AND EXHIBITOR OPPORTUNITIES

<http://conf.itsmf-japan.org>

8th *it*SMF Japan Conference

*it*SMF Japan EXPO 2011

Date November 30・ December 1, 2011

Location Roppongi Academyhills 49

Participants 1,400

Sponsorship

Platinum	2
Gold plus	2
Gold	4
Silver Plus	6
Silver	6
Bronze	6

Presented by *it*SMF Japan
Nikkei Computer

■ Sponsorship Details

		Platinum	Gold Plus	Gold	Silver Plus	Silver	Bronze
Speaking Opportunity	Presentation Room (45 Min)	<620 seats> Tower Hall + Satellite room	<350 seats> Tower hall *Lunch session	<350 seats> Tower hall	<120 seats> Sky studio	<100 seats> Conference room 1+2	—
	Complimentary Registrations	10	10	10	5	5	—
	Complimentary Staff Pass	10	10	10	5	5	—
	Free Advertisement in Nikkei Computer	1/2 Page	1/4 Page	1/4 Page	1/15 Page	1/15 Page	1/16 Page
EXPO	Booth size	6㎡	4㎡	4㎡	2㎡	-	2㎡
	Open stage(60 seats)	30 Min	30 Min	30 Min	20 Min	20 Min	-
	Other benefits	<ul style="list-style-type: none"> • Sponsors will be introduced at itSMF Japan's conference homepage • Conference Handbook Posting • On-Site Screen Signage 					
Availability		2	2	4	6	6	6
Price	Regular	¥3,580,500	¥2,772,000	¥2,194,500	¥1,501,500	¥1,155,000	¥577,500
	Early Discount	¥3,255,000	¥2,520,000	¥1,995,000	¥1,365,000	¥1,050,000	¥525,000

Conference & Expo Program

9:30~18:30, November 30•December 1

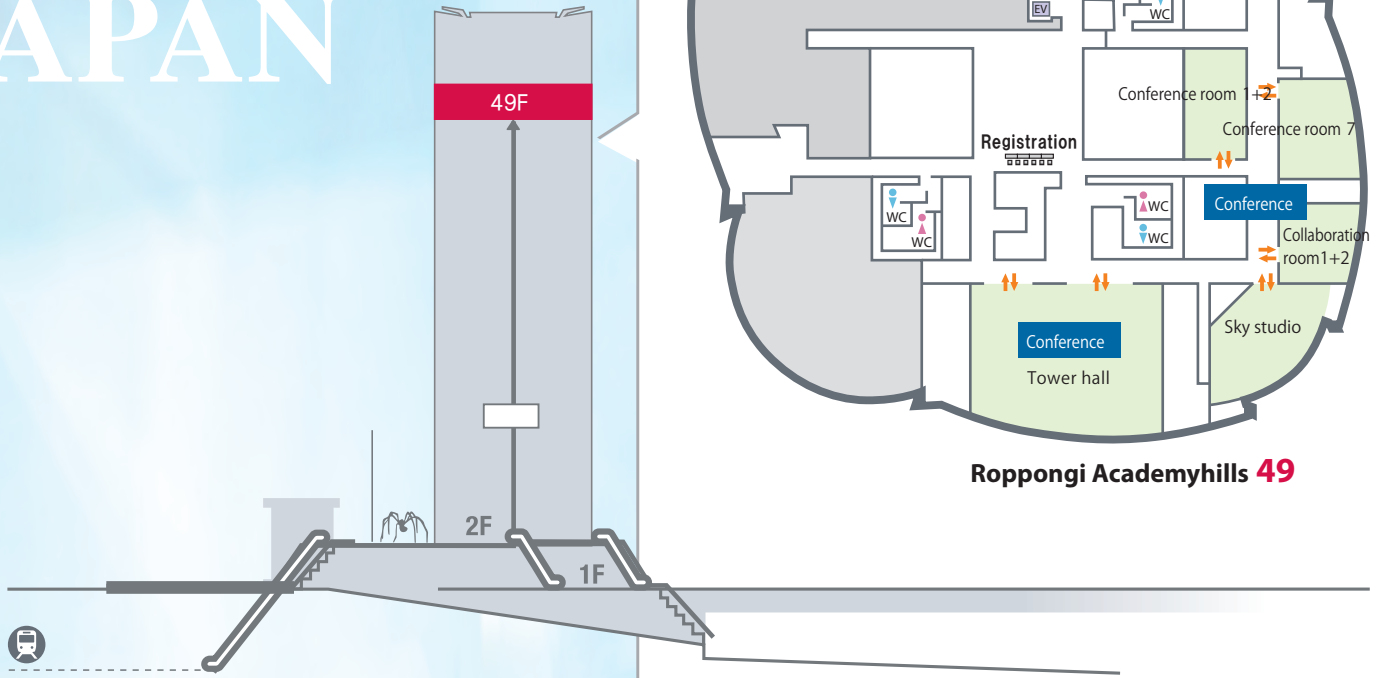
	Conference				EXPO		
	Tower hall <500 seats>	Sky studio <120 seats>	Conference room1+2 <100 seats>	Conference room7 <57seats>	Open stage <60seats>	Collaboration room1+2 <60seats>	Exhibition
9:00							
9:30							
10:00	Keynote	Satellite					
11:00	Keynote	Satellite					
12:00	Platinum	Satellite					
13:00	<Lunch session> Gold Plus						
14:00	Gold	Silver Plus	Silver	Case Study	Sponsor	Sponsor	
15:00	Gold	Silver Plus	Silver	Case Study			
16:00	<i>it</i> SMF Japan	Interest Group	Interest Group	Interest Group			
17:00	<i>it</i> SMF Japan						
18:00							
18:30							

*it*SMF JAPAN



itSMIE JAPAN

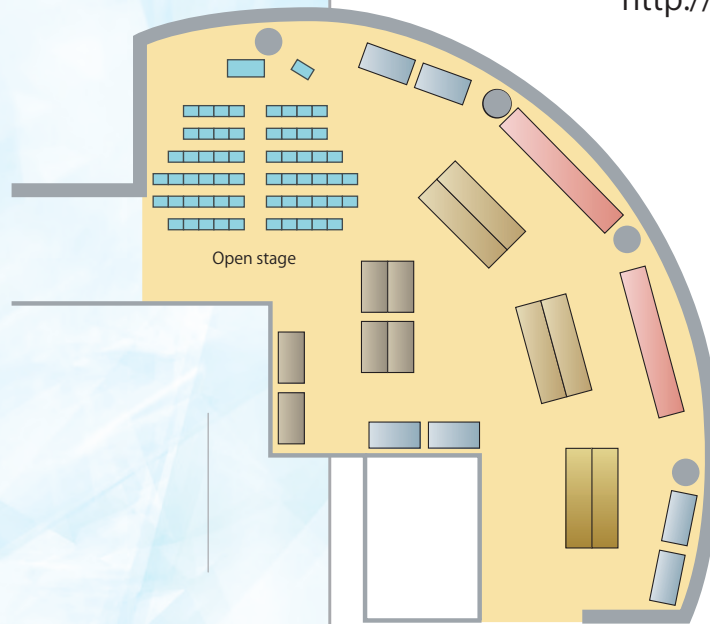
◆ Conference & EXPO Layout



Roppongi Academyhills 49

<http://www.academyhills.com/>

◆ Exhibition Layout



◆ Exhibition Space

■ Booth size

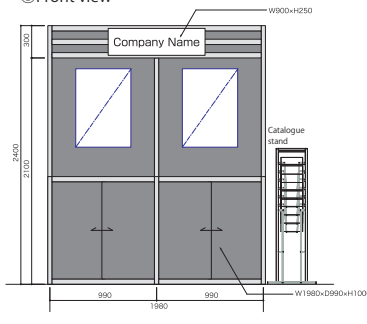
Platinum = 6 m²

Gold Plus · Gold = 4 m²

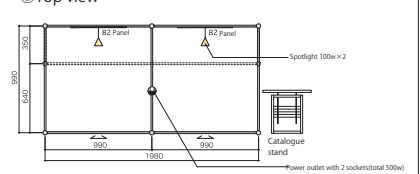
Silver Plus · Bronze = 2 m²



◎ Front view



◎ Top view

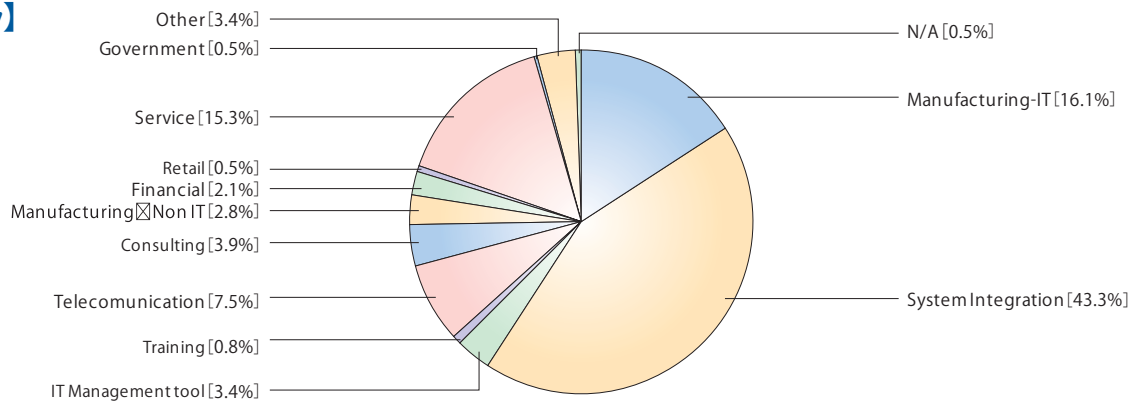


- Accessory sets
- Spot light 100W X 2
- Table with cabinet X 2
- Catalogue stand X 1
- Power outlet X 1

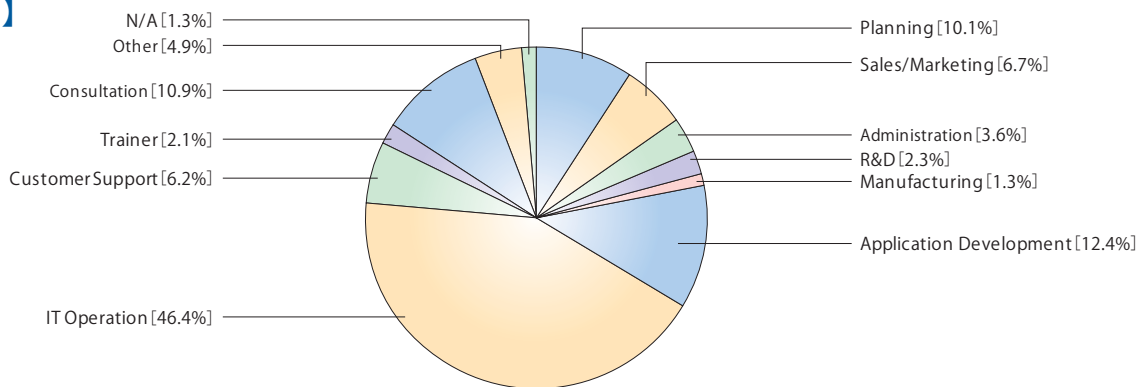
◆ Attendees for 7th itSMF Japan Conference/itSMF Japan EXPO 2010

- July 22th·23th,2010
- Total attendees 1,390

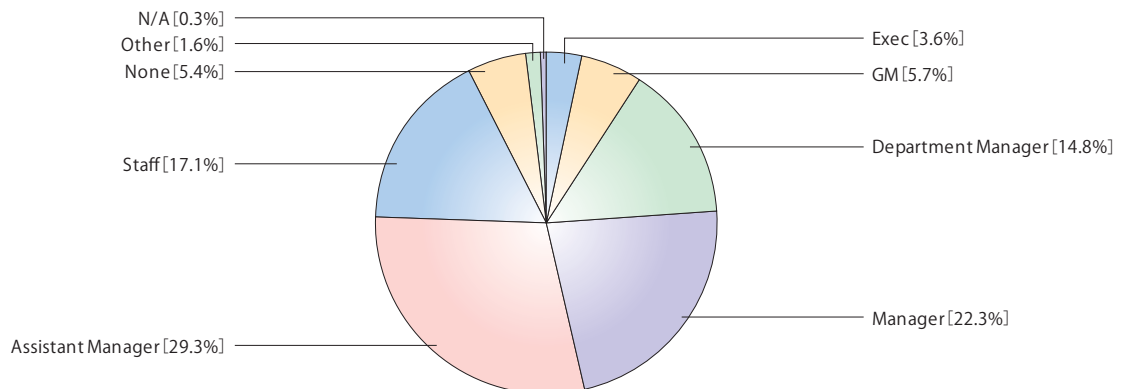
【Industry】



【Occupation】



【Position】



itSMF Japan

6F-A Shiba Building
 5-16-7 Shiba Minato-ku
 Tokyo Japan 108-0014
 Tel: +81-3-5439-5591 Fax:+81-3-5439-5592
info@itsmf-japan.org
<http://www.itsmf-japan.org>